

Welcome to Hyattsville

Welcome Guide for New Residents

Published by the Hyattsville Community Development Corporation
Fall 2016 www.hycdc.org/welcome



Scan to view this
guide online

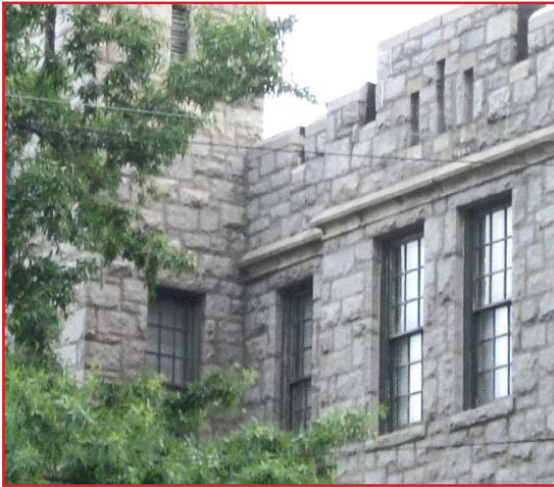
Your New Community

Hyattsville is a world within walking distance. You will find shops, entertainment, transportation, and other amenities you need within two miles. We invite you to use this Guide as an introduction not only to what's in your neighborhood, but to the rest of the City, which is also available online.

This guide will be updated as Hyattsville residents and visitors let us know of corrections, useful additions, suggestions, and tips. We welcome your feedback and suggestions.

Use this Guide to

- Learn more about Hyattsville's neighborhoods;
- Read a bit on Hyattsville's history;
- Find parking, transit, and safety information;
- Explore restaurants, shops, and local events; as well as
- Find local telephone numbers and resources.



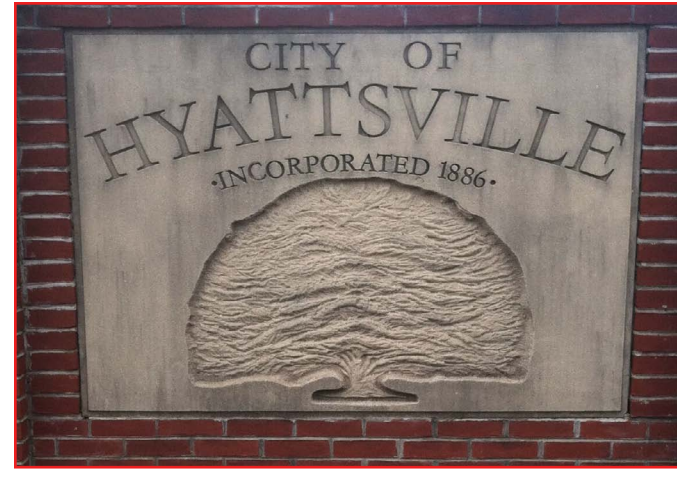
A World Within Walking Distance

This Guide provides locals, visitors, and residents with a tour-like guide to introduce the many features that the City of Hyattsville has to offer. It gives a quick overview of Hyattsville's neighborhoods, how to get around the city, its entertainment, dining and shopping options, business and civic services, schools and parks, and important information contacts.

The Welcome Guide also includes an array of picturesque photographs that capture the beauty of the city.

Table of Contents

- Your New Community 1
- A World Within Walking Distance 3
- Getting Around 4
- Public Transit 5
- Hyattsville History 7
- Commercial Areas 8
- Events + Services 16
- Residential and Business Services 17
- Schools and Parks, Youth Programs 18
- Contact Lists 20



Getting Around

Local, Regional, International; within walking distance...

Over the past 50 years, Hyattsville has seen enormous growth from a streetcar suburb into an adaptive, bustling metropolitan city. Here are three features that 'Hyattsvillagers' love to brag about; for even more, flip to: Commercial Areas (p. 7)

Retail + Dining

There are **over 60** restaurants, bars + take-outs with places to sit and dine within Hyattsville. The city has three popular restaurant nodes:

- Route 1 Restaurant Cluster,
- West Hyattsville's Queens Chapel Town Center, and
- The many shopping centers of Prince George's Plaza Transit District

Not to mention a few hidden gem restaurants and cafes on the way! Grab a dining guide to find your niche: www.hycdc.org/dining

Arts + Culture

Home to the Gateway Arts District, the Route 1 Corridor (Baltimore Ave.-Rhode Island Ave.) greets its visitors from Washington DC to Prince George's County, and features popular restaurants like

- Franklin's Restaurant & Brewery, Busboys & Poets, Yes! Organic Market,
- Vigilante Coffee, Chez Dior, Shagga Coffee, and more.

Visit www.mygatewayarts.org to find an events calendar, arts resources, and artist + business directories.

Location

Hyattsville is located in the center of the Beltway within Prince George's County, just north of NE DC and just south of College Park and the University of Maryland. Hyattsville offers welcoming neighborhoods and a rich history of its own. You'll be pleasantly surprised to find convenient access to public transit and parking, not to mention: shopping, dining, schools, parks, playgrounds, sports, community centers.

Visit www.hycdc.org/directory, for a local business directory and area maps.



Public Transit

Walk a trail, catch a bus, drive, pedal, hop on the train:

Within a mile east-west of the Route 1 Corridor, you can find both small town wonder and a big city adventure. Just pick your starting point and hit go:

Rail + Bus

Within the City of Hyattsville:

- [Prince George's Plaza Station](#) (Green Line – 86, F8, 13)
- [West Hyattsville Station](#) (Green Line – F8, 13)

Along Route 1:

- **West:** [Riverdale Park MARC Station](#) (Camden Line)
- **North:** [College Park-U of MD Station](#) (Green Line – 81, 82, 83, 84, 86, 17, MARC)
- **South:** [Rhode Island Ave-Brentwood DC Station](#) (Red Line, 81, 82, 83, 86)

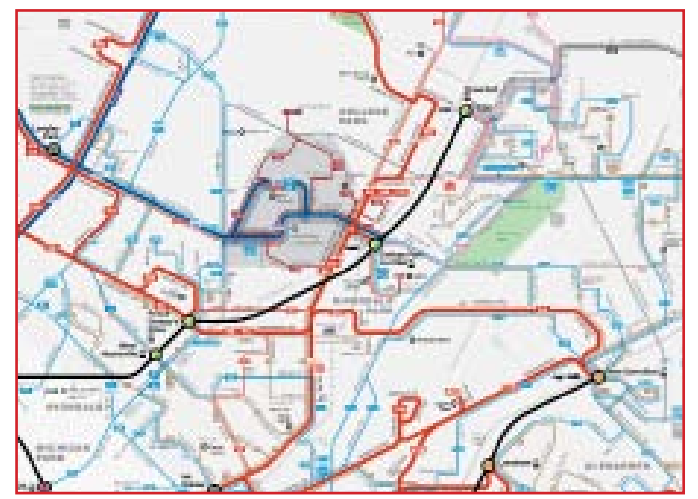
Go Mobile

Call the following services or head online for pricing + hours of operation:

- [Call-a-Bus](#), 301-499-8603
- [Guaranteed Ride Home](#), 800-745-RIDE (7433)

Find a bus in live-time:

- [The Bus](#)
- [NextBus](#)
- [Route1Ride.org](#)
- Find a TransitScreen at a participating business near you.



Did You Know?

Route 1 has a fast, efficient, and inexpensive shuttle that engages riders and drivers to see the economic development that is making Route 1 a destination.

The history of Route 1 goes back to an on-going need for full-length corridor service that could transport riders along any part of Route 1 inside the beltway.





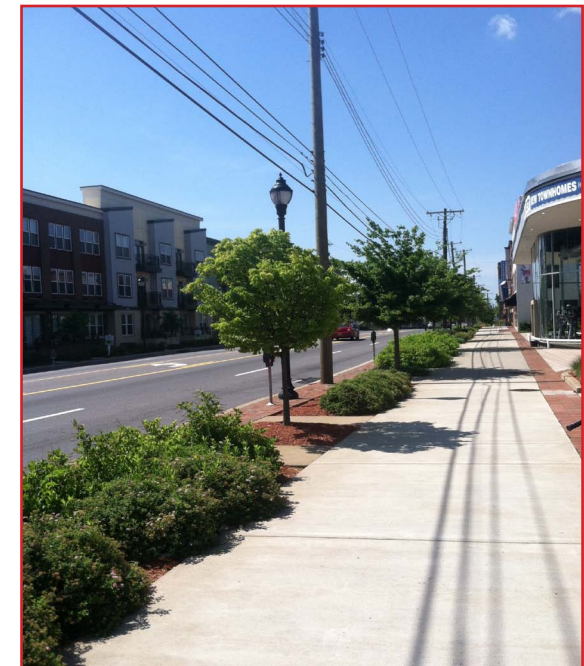
Hyattsville History

In 1845, merchant Christopher Hyatt purchased a parcel of land near the Baltimore and Ohio railroad, Washington and Baltimore Turnpike, and shipping ports on the Anacostia River. The surrounding farmland was subdivided into housing lots, and by 1859 the area was known as Hyattsville by the U.S. Post Office and cartographers. The Act of Incorporation of the City of Hyattsville was signed in 1886.

As Andra Damron recounts in *Images of America: Hyattsville*, the end of the Civil War and slavery forced the sale of tobacco plantations at low prices just as the federal government expanded and Washington, D.C., housing prices rose. Hyattsville's hilly location by the turnpike made it ideal for homebuyers seeking relief from Washington's heat. By 1899, an electric streetcar line to Washington had opened. In 1982, the efforts of preservation-minded citizens paid off: about 600 buildings were listed as a district on the National Register of Historic Places. In 2004, the district was extended to include approximately 1,000 structures.

The City of Hyattsville covers just under three square miles. Today, Hyattsville truly is, as its new motto says, "A World Within Walking Distance". Residents benefit from the increasing numbers of local businesses, including a yarn store, bike shop, salons, movie theaters, and restaurants. Hyattsville continues to benefit from its proximity to our nation's capital and the easy access to Washington via two Metro stations and nearby MARC train. With its varied housing stock; its own police force; its newspaper, the *Hyattsville Life and Times*; its designation as a state-designated Arts and Entertainment District; and its diverse and caring inhabitants, Hyattsville—as its old motto said—is "A Good Place To Live".

- The Hyattsville Preservation Association, PreserveHyattsville.org



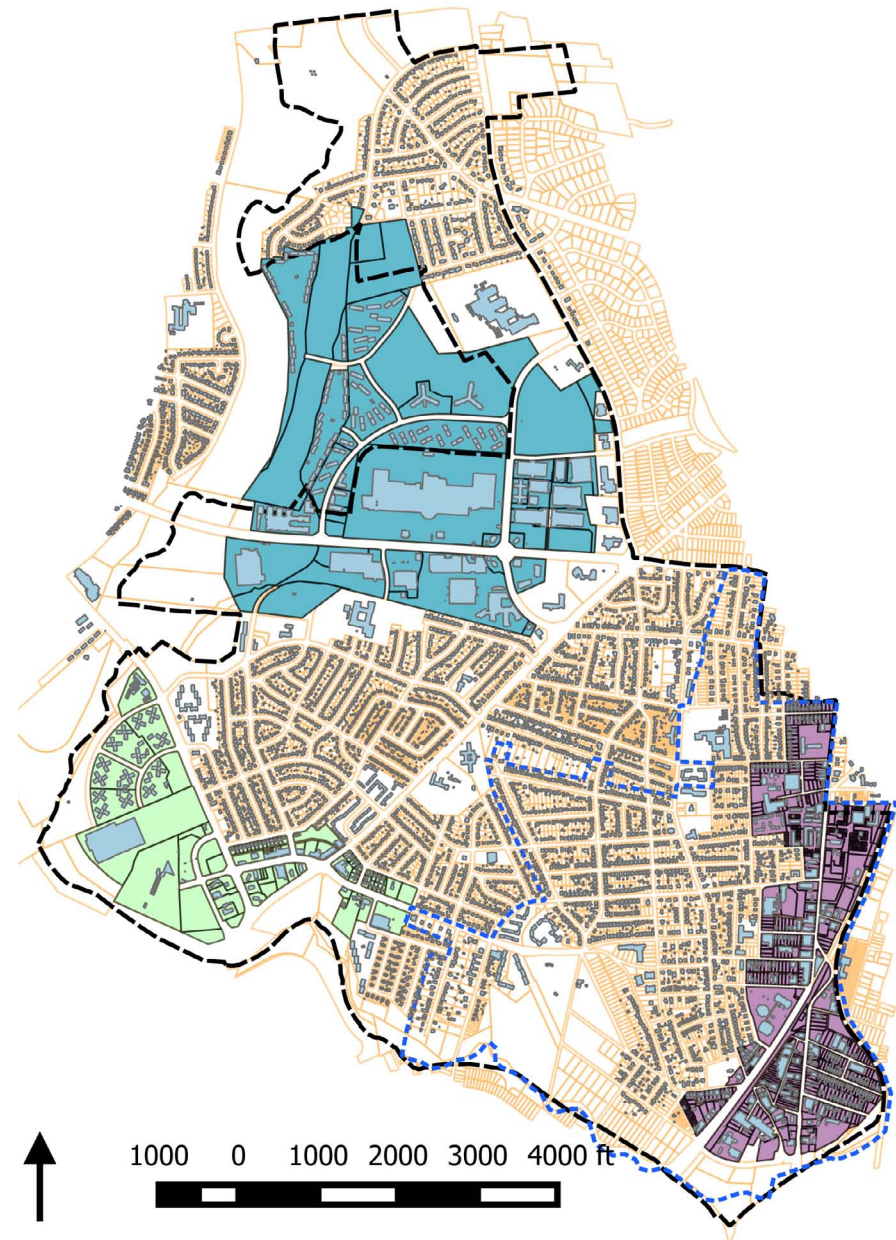
DID YOU KNOW?

Hyattsville is a tree-friendly, renewable-energy using, sustainable City. It is also part of the EPA's Green Power Partnership and one of Maryland's Smart Energy Communities.



Commercial Areas

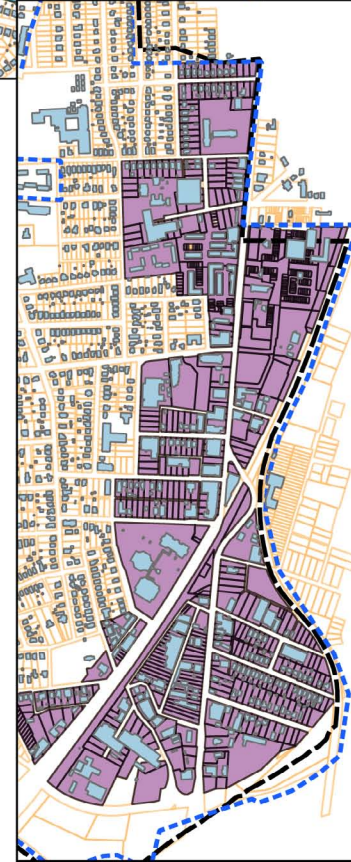
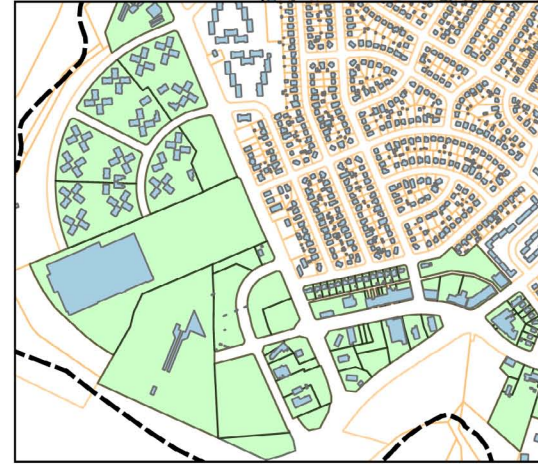
Four walkable neighborhoods, one great town



Prince George's Plaza Transit District



West Hyattsville Transit District



Route 1 Corridor and the Gateway Arts District (Four Towns, One Arts District!)

Your Key to the City

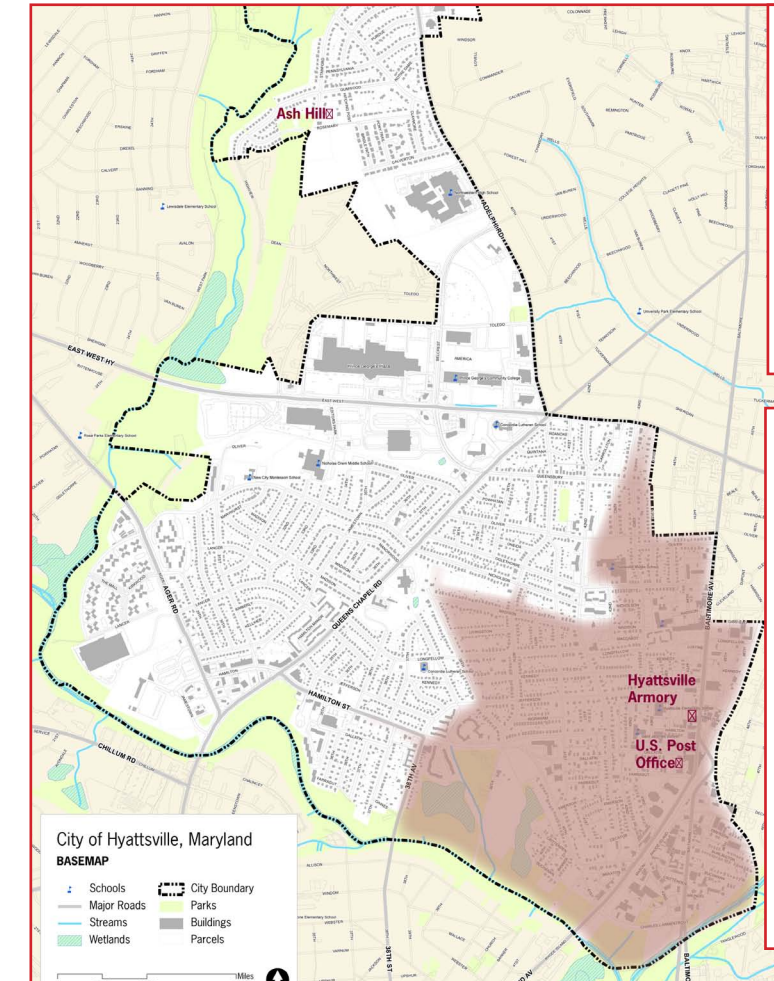
-  Buildings
-  Historic District
-  City Boundary
-  West Hyattsville
-  Route One Corridor
-  Prince George's Plaza



The Historic District

In the heart of Hyattsville, this residential neighborhood stretches between the Route 1 Corridor, Prince George's Plaza, and West Hyattsville. [The Historic District](#) features nineteen properties listed in the National Register of Historic Places, which are a fine example of our City's history and architectural development.

Regular events include [The Annual Historic Hyattsville House Tour](#), [The Hyattsville Cyclocross Bicycle Race](#), [The Great Magruder Park Egg Hunt](#), and more. Ready for a walk? Download the Historic Hyattsville Walking Tour Brochure at www.preservehyattsville.org; it even includes a game for all ages.



A Blast from the Past

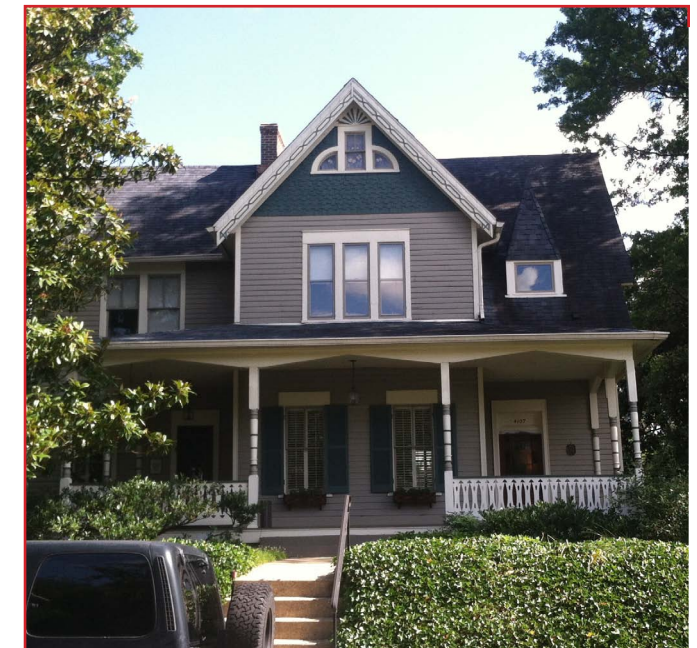
The Suburban Citizen (1892) writes:

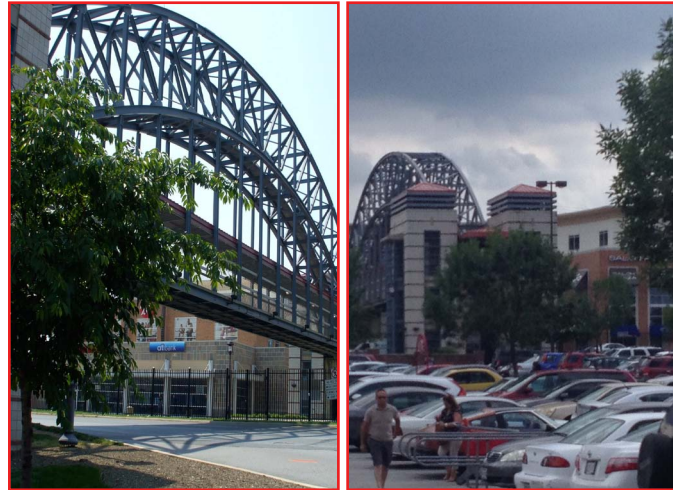
Hyattsville is a beautiful village... Its surroundings are all of the most delightful character, and as a business or residential location it cannot be surpassed, nesting as it does on and around a beautiful chain of Maryland hills.

Did You Know?

Hyattsville was originally a stop on the Baltimore-Ohio Railroad, and along with Riverdale Park, grounded itself as a transit-rich area with quick access to plenty of Greater DC resources.

Today, with the WMATA Prince George's Plaza and West Hyattsville Stations, close proximity to Riverdale Park's MARC station, and the automotive-friendly Route 1 Corridor, the City is only miles away from the University of Maryland, the DC line, Bladensburg, and a five mile drive from Greenbelt, Largo, New Carrollton, and Silver Spring.





Prince George's Plaza

Walk or Drive: Along East-West Hwy, explore a variety of dining, entertainment, and retail in this growing metropolitan hub. With shopping centers such as the *Mall at Prince George's*, *University Town Center*, and the *Shoppes at Metro Station*, just to list a few, the Prince George's Plaza community is growing as a center for business development. Just north of Prince George's Plaza is the residential neighborhood of University Hills, which features a range of single-family ranches, colonials, and it is home to Ash Hill, the oldest house in Hyattsville, as well as the University Hills Neighborhood Park.

Directions by bus

- **From the South:** [Rhode Island Ave-Brentwood Station](#): Take the 86 and get off at the station.
- **From the North:** [College Park-U of MD Station](#): Take the 86-Southbound and get off at the station.
- **From the Southwest:** [West Hyattsville Station](#): Take the F8 or the Bus 13 and get off at the station.

Directions on foot

- **From the Route 1 Corridor**, walk north on Baltimore Ave., turn left at Queensbury Rd. Keep walking until you find Queens Chapel Rd. Cross the intersection, and stay straight as Queensbury becomes Belcrest Rd.*
 - **From the West Hyattsville Station**, walk north on Queens Chapel Rd. and turn left at Belcrest Rd.*
- *The Prince George's Plaza Station is on your left beyond Mosaic at Metro Apartments.

DINING, GROCERIES + ENTERTAINMENT

East: University Town Center + Shoppes at Metro Station

- | | | |
|--------------------------------------|--------------------------------|---------------------------|
| • Prince George's Plaza Comm. Ctr. | • Old Dominion Brewhouse | • Starbucks |
| • Hyattsville Public Library (PGCML) | • Carolina Kitchen Bar & Grill | • Tokyi Sushiredo |
| • Regal Royale Stadium 14 | • Bonchon | • La Chaquita |
| • Safeway | • Qdoba Mexican Grill | • Pollo Campero |
| • Town Center Wine + Spirits | • Five Guys | • Giant Food |
| • Pollo Campero | • UTC <i>Images of America</i> | • Int'l Progreso Market 3 |

West: The Mall at Prince George's + Metro Shops

- | | | |
|----------------------|------------------------------|--|
| • Outback Steakhouse | • Golden Crust Carib. Bakery | • <i>Pilgrim's Quandary</i> Sculpture at Post Park Plaza |
| • The Olive Garden | • Target | |
| • Kingston Arbor | • Food Court Shops | |

West Hyattsville

Home to Queens Chapel Town Center, featuring locally owned restaurants and shops, popular routes of the *Anacostia Tributary Trail System*, and the West Hyattsville Metro Station. With several international restaurants, tailors, thrift stores, and grocers, you will find that West Hyattsville captures a walkable, suburban small-town feel with plenty of multicultural finds.

Directions by bus

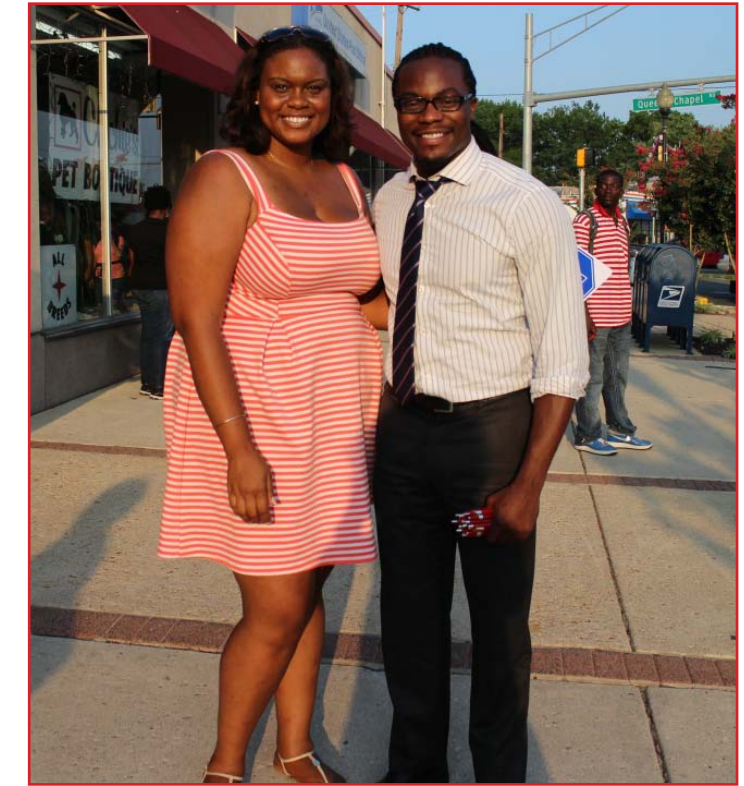
- **From the North:** [College Park-U of MD Station](#): Take the 86 Southbound, get off at the Prince George's Station and transfer to the F8 or The Bus 17.
- **From the Northwest:** [Prince George's Plaza Station](#): Take the F8 or the Bus 13 and get off at the station.
- **From the South:** [Rhode Island Ave-Brentwood Station](#): Take the 86 and get off at 38th Ave. and Hamilton St. Walk a half mile northeast on Hamilton St., and you'll note the Bestway Supermarket, the Hamilton St. Garden, and stay straight to reach the Queens Chapel Town Center Shopping Center.

DINING + GROCERIES

- | | |
|------------------------------|------------------------|
| • New Century Carry Out | • Mi Pueblito Bakery |
| • Acapulco Spirit Restaurant | • Pizza Hut |
| • Baskin-Robbins | • Kitchen Near You |
| • Lee's Liquors & Restaurant | • ALDI |
| • Kentucky Fried Chicken | • Bolivia Int'l Market |
| • Emerita's Pupuseria | • Bestway |
| • Curzi's Seafood | • The Store |
| • Sahara Oasis | • Mercadito Cruz |

ENTERTAINMENT

- Magruder Park
- Stream Valley Baseball Field
- Artway North on Hamilton St.
- Northwest Branch Trail



TOP 10 LISTS

A World Within Walking Distance. Explore our Top 10 lists for a self-guided walking tour of area restaurants, public art, historic sites, and tourist attractions.



Route 1 Corridor

A growing corridor of arts, entertainment, and dining

Downtown Hyattsville is a place to take an evening walk, see an art exhibition, or have a night out on the town. Explore Route 1's walkable shopping centers, shops, apartment complexes, and townhomes.

Looking for something to do? Route 1 features ongoing and yearly civic and arts events, like the [Outback Steakhouse Summer Jam Series](#), the [Annual Downtown Hyattsville Arts Festival](#), and various [Gateway Arts District](#) programs.

Directions by bus

• **From the North:** [College Park-U of MD Station:](#) Take the 83, 86, or The Bus Route 17/[Route 1 Ride](#), Southbound towards Rhode Island Ave-Brentwood. Get off beside Busboys and Poets at Jefferson St. & Baltimore Ave. If you take the 86, get off at Jefferson St. and 40th Ave., turn left, walk up Jefferson St.*

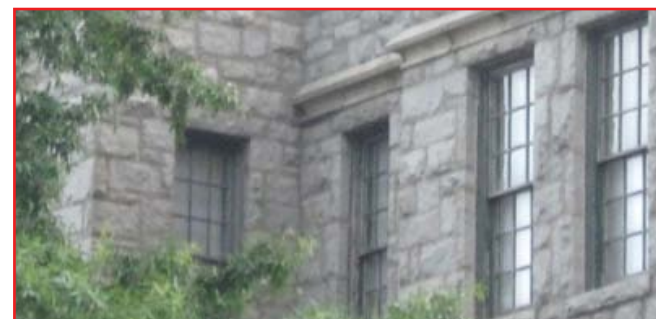
• **From the Northwest (on foot):** [Riverdale Park MARC Station:](#) Walk south along the Route 1 Hiker-Biker Trolley Trail.

• **From the South:** [Rhode Island Ave-Brentwood DC Station:](#) Take the 83, which runs through the Arts District. Get off beside Franklin's at Rhode Island Ave. & Baltimore Ave.

• **From the Northwest:** [Prince George's Plaza Station:](#) Take the 86-Southbound towards Rhode Island Ave-Brentwood. Get off at Jefferson St. and 40th Ave., turn left, walk up Jefferson St., cross at the intersection; you will see Busboys & Poets. If you take the F8 or The Bus 13, get off at Baltimore Ave. and Jefferson St.*

• **From the Southwest:** [West Hyattsville Station:](#) Take the F8 Eastbound towards Cheverly Station or The Bus 13 Southbound. The F8 turns right onto Rhode Island Ave. at Jefferson St. The Bus 13 runs both directions, running through Rhode Island Ave. Get off at Baltimore Ave. and Jefferson St.*

*Cross at the intersection; you will see Busboys & Poets + the Shoppes at Arts District Hyattsville.



DINING, GROCERIES + ENTERTAINMENT

* = Ongoing

From North to South along Baltimore Avenue

- | | |
|------------------------------|-----------------------------------|
| • Shagga Coffee & Restaurant | • Elevation Burger |
| • Café Azul | • Spice 6 |
| • Jimmy John's | • Yogi Castle |
| • Subway | • Busboys and Poets |
| • Chipotle | • Franklin's Restaurant + Brewery |
| • Tara Thai | • Chez Dior |
| | • Yes! Organic Market |

- Pyramid Atlantic*
- Vigilante Coffee
- Art Works Now
- Shortcake Bakery
- Melrose Skate Park
- Stream Valley



TOP 10 LISTS

A World Within Walking Distance. Explore our Top 10 lists for a self-guided walking tour of area restaurants, public art, historic sites, and tourist attractions.

CREATE



GATEWAY ARTS DISTRICT



INNOVATE / CREATE / INSPIRE

Discover Things to Do
at www.mygatewayarts.org

Our **FREE** Events Calendar shares what's going on in the



Prince George's County's Gateway Arts & Entertainment District is comprised of the four municipalities of Hyattsville, North Brentwood, Brentwood, and Mount Rainier along Route 1. Enjoy the Corridor: Explore MyGatewayArts.org for free information, recent news, and a calendar of events by artists and organizations.

PLAY

With a variety of restaurants, coffee houses, local and regional theaters, galleries and entertainment, the Gateway Arts District is the perfect place to spend time with family and friends. Along the Corridor, you can easily discover recreational activities to do for the weekdays, weekends, weeknights, or any time you decide to have some fun. Remember to check out the online [calendar](#) for daily activities.

WORK

Being a safe, active, and attractive environment, the Gateway Arts District is also the community's best tool to market and search for artists, designers, or art-related organizations and businesses. Learn about the list of resources for Gateway artists and businesses on the [Creative & Business Resources](#).

LIVE

The Gateway Arts District is the perfect home for artists, art-lovers, families, commuting professionals, and students. It offers tax benefits for artists, affordable housing and its closeness to DC, emerging businesses, among others. The Gateway Arts District is a place to inspire and get inspired.



Events + Services



Discussion Groups

- [H.O.P.E. in Hyattsville Yahoo! Group](#): works toward protecting the environment, creating a strong community, and a healthy local economy.
- [West Hyattsville Yahoo! Group](#): Dedicated to residents West of Queens Chapel Road and Ward 5 within the city limits of Hyattsville.
- [Hyattsville Nurturing Moms Yahoo! Group](#): a strong-bonded community that supports mothers with information for them and their young children.

- Hyattsville Life & Times
- Hyattsville Today

Online Calendars

You can visit these local online calendars for events and daily activities for fun and entertainment:

- [Gateway Arts District \(mygatewayarts.org\)](#)
- [City of Hyattsville \(hyattsville.org\)](#)
- [Maryland Milestones \(MarylandMilestones.com\)](#)



Annual Events

- [Anniversary Parade, Carnival & Fireworks](#): do not miss out this annual event held every April, so invite friends and family to spend time together and enjoy the awesomeness of the community.
- [The International Festival](#): a multicultural way to get to know your neighbors and celebrate together with food, music, and dancing. Also, this is a great opportunity to get involved in various programs that the City of Hyattsville offers. This annual event is held in June.
- There are also [Holiday Celebrations](#) and [Special Events](#) held through the year by the Department of Community Services, such as Breakfast with Santa, Summer Jam Series, Dogs for the Arts, Shakespeare in the Park, and many more.

Social Media

- [#Hyattsville](#) [#SpeakUpHVL](#)
- [Hyattsville Wiki](#)
- [Memories of Growing Up In Hyattsville, MD](#)
- [The City of Hyattsville Facebook Page](#)
- [Hyattsville Arts Festival Flickr Group](#)
- [Hyattsville Wire](#)



Open this list online!

Residential and Business Services

Scan to learn more about doing business in Hyattsville



Home Care

- **Once-Weekly Collection of Household Solid Waste:** Solid waste is collected every Tuesday, Wednesday, Thursday, and Friday. For more detailed information about collection routes by street name or by map, visit the [City Website](#).
- **Recycling:** Glass, plastic, and metals are collected on Thursday and Fridays and should be placed in the blue Prince George's County-provided cart. Paper (newspaper, telephone books, magazines, etc.) is also collected. To learn more, visit [Prince George's County Residential Recycling Program](#).
- **Electronics Recycling:** electronics collection is free of charge. Check out the [City Website](#) for the location and dates of the event.
- **Household Hazardous Waste:** Such wastes include swimming pool chemicals, driveway sealers, fire extinguishers, and oil-based paints. Learn more at [Prince George's Waste Management Group](#).
- **Yard/Lawn Waste:** waste is collected on Mondays year round. Yard waste mixed with household waste will be collected as household waste. Review the [Acceptable & Unacceptable](#) items.

Doing Business

The Hyattsville CDC has created a [Business Toolkit](#) as part of its economic development and technical assistance services for Hyattsville and Prince George's County Inner-Beltway communities. The Toolkit serves as a guiding overview and reference for business owners looking to re-locate in Hyattsville or potential business owners looking to start a business here.

Benefits

- Create and register your Business
- Move your Business
- Find a Property to Purchase or to Lease
- Get a quick-and-easy list to register properly with the County and with the City
- Learn of applicable tax incentives, loan providers, and contacts
- Attend an upcoming HCDC Workshops
- Attend a Business Owners Workshop or Breakfast to share tips and experiences.
- Subscribe to development announcements and local news.
- Benefit from becoming a member of HyCDC.

Search a Database of Local Assets: Businesses, Properties, Dining + More

Mapping and listing over 800 businesses, properties, transit stops, and public art throughout the city's four commercial areas, filter through our online database for your various needs. Data include standard contact information, social media, vacant storefronts, transit points, and where possible, property data from the *Consolidated Route 1 Communities Primary Trade Area (PTA)*. Data are collected on-foot and online.



Schools and Parks

Hyattsville and its surrounding communities have plenty of schooling options for children and young adults. A full listing is available online at <http://www.hycdc.org/schools>.



Public Schools

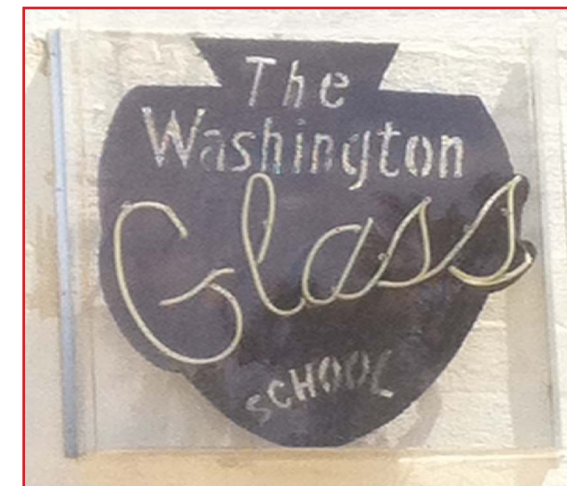
- [College Park Academy Public Charter](#)
7501 Adelphi Road, Hyattsville, MD 20783
(240) 696-3206
- [Hyattsville Elementary School](#)
5311 43rd Avenue, Hyattsville, 20781
(301) 209-5800 [PTA Website](#)
- [Hyattsville Middle School for the Creative and Performing Arts](#)
6001 42nd Avenue, Hyattsville, 20781
(301) 985-1760
- [Nicholas Orem Middle School](#)
6100 Editors Park Drive, Hyattsville, 20782
(301) 853-0840
- [Edward M. Felegy Elementary School](#)
6111 Ager Road, Hyattsville, 20782
(301) 445-8090
- [Rosa L. Parks Elementary School](#)
6111 Ager Road, Hyattsville, 20782
(301) 445-8090
- [University Park Elementary School](#)
4315 Underwood Street, University Park, 20782
(301) 985-1898
- [Eleanor Roosevelt High School](#)
7601 Hanover Parkway, Greenbelt, MD 20770
(301) 513-5400
- [Northwestern High School](#)
7000 Adelphi Road, Hyattsville, 20782
(301) 985-1820

Private Schools

- [Greenwood School \(Daycare, PK, K\)](#)
6525 Belcrest Road, Suites G-80 & G-90, Hyattsville, MD 20782
(301) 458-4860
- [St. Jerome School](#) (PK-8)
5207 42nd Pl, Hyattsville, MD 20781
(301) 277-4568
- [St. Matthew's Episcopal Day](#) (PK)
5901 36th Avenue, Hyattsville, MD 20782
(301) 935-5026
- [Chelsea School](#) (6-12)
2970 Belcrest Center Drive, Suite 300, Hyattsville, MD 20782
(240) 467-21006
- [DeMatha Catholic High School](#)
4313 Madison Street Hyattsville, MD 20781
(240) 764-2200
- [Elizabeth Seton High School](#)
5715 Emerson St, Bladensburg, MD, 20710
(301) 864-4532

Art Classes, Workshops, And Camps For Youth

- [Art Works Studio School](#)
Arts & Crafts Classes, Workshops, and Camps
3711 Rhode Island Avenue, Mount Rainier, 20712
[E-mail](#) | (301) 454-0808
 - [Brentwood Arts Exchange](#)
Camps, Arts & Crafts Workshops such as Photoshop + Painting
3901 Rhode Island Avenue, Brentwood, 20722
[E-mail](#) | (301) 277-2863
 - [Washington Glass School](#)
Glasswork Classes, and Workshops
3700 Otis Street, Mount Rainier, 20712
[E-mail](#) | (202) 744-8222
 - [World Arts Focus & Joe's Movement Emporium](#)
Arts Classes/Workshops and Camps
3309 Bunker Hill Avenue, Mount Rainier, 20712
[E-mail](#) | (301) 699-1819
1. [Ballet Tap and all that Jazz](#)
 2. [Just Rock Enterprises](#)
 3. [DC Glassworks](#)
 4. [Prince George's African American Museum](#)



Public Parks + Playgrounds

Hyattsville has several and beautiful parks for recreational activities. Learn more about them on the [City of Hyattsville website](#).

- **Robert J. King Memorial Park and Playground**
42nd Place, Gallatin St.
- **Burlington Park and Playground**
46th Ave. and Burlington Rd.
- **University Hills Duck Pond Park and Playground**
3400 Stanford St.
- **Deitz Park and Playground**
4100 block, Oliver Street
- **Hyatt Park and Playground**
36th Ave., Hamilton St.
- **Magruder Park**
40th Ave. and Hamilton St.
- **Heurich Park**
Ager Road and Nicholson St.
- **Melrose Skate Park**
41st St. and Rhode Island Ave.
- **Centennial Park**
Baltimore Ave. and Hamilton St.
- **Nicholson Park**
40th Ave., Nicholson St.
- **McClanahan Park**
Near the Prince George's Plaza Metro Station

HEAD ONLINE: GO MOBILE

Hyattsville is just one municipality within the Inner Beltway communities stretching down Route 1. On the Hyattsville CDC's online [Business Directory](#), you can find a live list of area schools, arts education and youth centers, and even civic and religious centers that offer after-school programs.

Municipal, County, and Recreation Contacts 2016



Municipal Services

Police

In Case of Emergency, dial 9-1-1

[Hyattsville City Police](#)

Emergency Phone: (301) 985-5050

Non-Emergency Phone: (301) 985-5060

TTY Phone: (301) 985-5039

Fax: (301) 985-5074

Fire, Rescue & EMS Response

[Hyattsville Volunteer Fire Dept.](#)

(301) 927-5770

Mayor & City Council Listing

(As of 05/2015)

- Candace B. Hollingsworth, Mayor
(202) 423-7752
chollingsworth@hyattsville.org

Ward 1

- Kevin Ward
kward@hyattsville.org
- Bart Lawrence, Council Vice President
blawrence@hyattsville.org

Ward 2

- Robert S. Croslin
rcroslin@hyattsville.org
- Shani Warner
swarner@hyattsville.org

Ward 3

- Patrick A. Paschall
ppaschall@hyattsville.org
- Thomas Wright
twright@hyattsville.org

Ward 4

- Paula J. Perry
pjperry@hyattsville.org
- Edouard Haba, Council President
ehaba@hyattsville.org

Ward 5

- Ruth Ann Frazier
rfrazier@hyattsville.org
- Joseph Solomon
jsolomon@hyattsville.org



City of Hyattsville

General Information: (301) 985-5000

- Finance / Accounting
- Administration
- City Clerk's Office
- Code Enforcement
- Community & Econ. Dvlpmnt
- IT Department
- Office of Volunteer Services
- Communications
- Department of Public Works
- Recreation & the Arts

County Services

Prince George's County

- [Deni Taveras, County Council, District 2](#)
(301) 952-4436
- [Paul G. Pinsky, State Senator, District 22](#)
(301) 858-3155
- [Dinora Hernandez, Esq., Public School Board of Education Member, District 3](#)
dinora.hernandez@pgcps.org

State Legislatures

State of Maryland Delegates, District 22

- [Tawanna P. Gaines](#)
(410) 841-2401
- [Alonzo T. Washington](#)
(410) 841-3652
- [Anne Healy](#)
(410) 841-3961

Service and Recreation Organizations

- [Boys and Girls Club for Hyattsville, Mount Rainier, and Brentwood](#)
301-864-1112
- [Latin American Youth Center Hyattsville, Langley Park](#)
301-431-3121
- [M-NCPPC \(Dept. of Parks and Recreation\)](#)
301-699-CALL (2255)
- [Langley Park Community Center](#)
301-445-4508; TTY 301-445-4512
- [Rollingcrest-Chillum Community Center](#)
301-853-2005; TTY 301-445-4512
- [Prince George's Plaza Community Center](#)
301-864-1611; TTY 301-445-4512
- [Maryland Community Services Locator \(MDCSL\)](#) <http://www.mdcs.org>

State of Maryland

- [Lawrence J. Hogan, Jr., Governor](#)
(410) 974-3901

- [Boyd K. Rutherford, Lt. Governor](#)
(410) 974-2461

United States House of Representatives

- [Steny H. Hoyer, House of Representatives, Maryland, 5th Congressional District](#)
(202) 225-4131
- [Donna Edwards, House of Representatives, Maryland, 4th Congressional District](#)
(301) 516-7601

United States Senate

- [Benjamin L. Cardin, Senator](#)
DC Office: 202-224-4524
Bowie Office: 301-860-0414
- [Barbara A. Mikulsi, Senator](#)
DC Office: 202-224-4654
Greenbelt Office: 301-345-5517

Non-Profit Organizations

Community Development

- [Hyattsville Community Development Corp.](#)
301-683-8267
- [Gateway Community Development Corp.](#)
301-864-3860

MORE? GO MOBILE

Looking for local Civic Groups: Affinity Groups, Volunteering and the like?

Find meetings and online neighborhood discussion groups!

Visit www.hycdc.org



Additional Assistance Learning About Hyattsville + Prince George's Co.



The Hyattsville Community Development Corporation:

The Hyattsville CDC is a 501 c(3) non-profit organization. We are professionals, tradesmen, business owners, artists, and longtime and new residents. We work to reverse indifference and blight in the City of Hyattsville and surrounding communities. We recognize Hyattsville's social, cultural, and material assets, and are committed to harnessing our community's potential and talents to revitalize the City and neighboring areas. Our board and staff are comprised of Hyattsville residents and local stakeholders. We are always open and eager to interact with those interested in our community.



- 4312 Hamilton Street
- Hyattsville, MD 20781
- (301) 683-8267
- www.hycdc.org
- eisenberg@hyattsvillecdc.org



Credits

Published by Hyattsville Community Development Corporation. Edition 4 - November 23, 2016.

(301) 683-8267 eisenberg@hyattsvillecdc.org

All photographs are credited to the Hyattsville Community Development Corporation unless otherwise noted below.

Page / Title-Credit

[B](#)—The Armory

[3](#)—Pilgrim’s Quandary by Alan Binstock at Post Park Plaza. Credit: Hyattsville CDC..

[3](#)—Hula-Hooping at the 2013 Hyattsville Arts Festival.

[3](#)—Seventh-Day Adventist Church

[3](#)—City of Hyattsville Monumental Signage.

[4](#)—Franklin;s.

[4](#)—Pilgrim’s Quandary by Alan Binstock at Post Park Plaza

[4](#)—Birdwatchers View by Eileen Cave

[4](#)—Hyattsville Arts Festival 2013. Credit Beth Hess

[5](#)—Route 1 Ride Wrap, Credit Marlyand Milestones

[5](#)—Bicycle in front of Lot 1, Credit Maryland Milestones

[5](#)—Prince George’s County Bus System Map, Credit WMATA

[5](#)—Northwest Branch Stream Valley near Route 1 2010

[6](#)—5108 42nd Ave Shepherd-Sibley House

[6](#)—Little free library at Centennial Park

[6](#)—42nd Avenue

[6](#)—Professional building, Gallatin Street

[7](#)—Baltimore Avenue/Route 1 at Madison Street

[9](#)—“Shepherd-Sibley House” - 5108 42nd Avenue (Private Residence)

[9](#)—“W.G. Lown House” - 4107 Gallatin Street (Private Residence)

[10](#)—Gorgeous Prince Georges Murals at the Mall at Prince Georges. . Credit PREIT.

[10](#)—Alan Binstock Installing Pilgrim’s Quandary 2009

[10](#)—Pedestrian Bridge from the Mall at Prince Georges Parking Lot

[11](#)—Mayor Hollingsworth & Delegate Alonzo Washington at National Night Out 2014. Credit Susie Currie

[11](#)—Wayfinding Signage

[12](#)—Downtown Hyattsville’s “Arts District Hyattsville” Development

[12](#)—Bursting in Air: Arachne Aerial Artists 2014

[12](#)—Hyattsville Justice Center 2015

[12](#)—Rhode Island Reds Bicyclists

[14](#)—Justin Poppe Painting at Hyattsville Arts Festival 2013. Credit Meena Yi

[14](#)—Downtown Automotive. Credit SuspectDevice.net

[14](#)—Hyattsville Arts Festival 2014. Credit Beth Hess

[14](#)—Hyattsville Community Arts Alliance Members. Roxanne Ando, Pen and Paintbrush,

[15](#)—Credit Gateway Arts District Management Team

[15](#)—Art Lives Here, taken at Joe’s Movement Emporium. Credit Duarte Image

[15](#)—Credit Gateway Arts District Management Team

[16](#)—County Service Building 2015

[16](#)—Arts District Hyattsville Signage on Longfellow Street

[17](#)—Recycle Sign at Hyattsville Arts Festival

[17](#)—Transformation Mosaic by Valerie Theberge

[17](#)—Creative Edge Event at Busboys & Poets

[20](#)—Hyattsville Municipal Buildng, 4310 Gallatin Street

[22](#)—4314 Farragut Street 2013

[22](#)—Volunteers Installing Andrei Trach’s Vainglorious Blue Bird 2002

[22](#)—Birdwatcher’s View by Eileen Cave



ENJOY