



Welcome to the City of Hyattsville!



Scan to view this
guide online

Your New Community

Hyattsville is a world within walking distance. You will find shops, entertainment, transportation, and other amenities you need within two miles. We invite you to use this Guide as an introduction not only to what's in your neighborhood, but to the rest of the City, which is also available online.

This guide will be updated as Hyattsville residents and visitors let us know of corrections, useful additions, suggestions, and tips. We welcome your feedback and suggestions.



Use this Guide to

- Learn more about Hyattsville's neighborhoods;
- Read a bit on Hyattsville's history;
- Find parking, transit, and safety information;
- Explore restaurants, shops, and local events; as well as
- Find local telephone numbers and resources.

Guide for New HVL Residents

Published by the Hyattsville Community Development Corporation Fall 2021

www.hycdc.org/welcome

HYATTSVILLE
Community Development Corp
a 501(c)3 non-profit organization



Hyattsville

Table of Contents

Page 1-3

Welcome to Hyattsville

Page 4-12

Important Contact information

Page 13-14

Schools + Public Parks and Playgrounds

Page 15-17

Hyattsville History + Did you know

Page 18-20

Retail + Dining + Entertainment in Hyattsville

Page 21-25

Getting Around Hyattsville

Page 26-27

Art + Culture in Hyattsville

Page 28-29

Gateway Arts District + Workshops and Camps for Youth

Page 30-31

About this Guide + Hyattsville Community Development Coportation



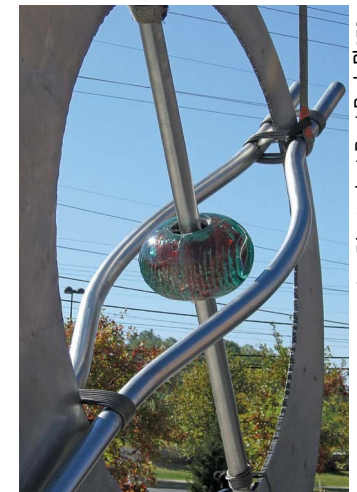
This Guide provides locals, visitors, and residents

with a tour-like guide to introduce the many features that the City of Hyattsville has to offer. It gives a quick overview of Hyattsville's neighborhoods, how to get around the city, its entertainment, dining and shopping options, business and civic services, schools and parks, and important information contacts.

The Welcome Guide also includes an array of picturesque photographs that capture the beauty of the city.



City of Hyattsville Monumental Signage.



Pilgrim's Quandary by Alan Binstock at Post Park Plaza.

Hyattsville Information

Stay Up To Date

Website

Our official website - www.hycdc.org - is the best source for current information.

Call Us - (301) 683-8267

You can contact us if you have any questions or concerns. Our office operates Monday, 9 am to 5 pm.

Social Media

Hyattsvillecdc post information on our social media account. Follow us on Facebook, Instagram and Twitter [@Hyattsvillecdc](https://twitter.com/Hyattsvillecdc)



City of Hyattsville Communications

Website and Social Media

Hyattsville official website www.hyattsville.org
Stay connected to the City of Hyattsville by following them [@CityofHyattsville](https://twitter.com/CityofHyattsville)



Emergency Safe Alerts

Text HVL to 99411

City News & Events

Hyattsville.org/notifyme

Sign up for email and text notifications

The Hyattsville Reporter

The City's official newsletter is printed in English and Spanish and mailed to residences within City limits twice per month. If you live in City limits and do not currently receive the Hyattsville Reporter, please contact pio@hyattsville.org

Other Resources

- **Hyattsville HOPE Listserv**
works towards protecting the environment, creating a strong community, and a healthy local economy. visit <https://groups.io/g/HOPE>
- **Hyattsville Wire**
The premier source for lifestyle news for the Route 1 corridor. visit <https://www.hyattsvillewire.com/>
- **Route One Fun | Fun Along the Route 1 Corridor**
<https://www.routeonefun.com/>
- **The Hyattsville Life & Times**
<https://streetcarsuburbs.news/>

City of Hyattsville Events

Annual Events

• **Anniversary Parade, Carnival & Fireworks:** do not miss out this annual event held every April, so invite friends and family to spend time together and enjoy the awesomeness of the community.

• **The International Festival:** This annual event held in June. A multicultural way to get to know your neighbors and celebrate together with food, music, and dancing. A great opportunity to get involved in various programs that the City of Hyattsville offers. know your neighbors and celebrate together with food, music, and dancing.

• **Holiday Celebrations** and **Special Events** held through the year by the Department of Community Services, such as Breakfast with Santa, Summer Jam Series, Dogs for the Arts, Shakespeare in the Park, and many more.



Online Calendars

You can visit these local online calendars for events and daily activities or fund and entertainment:

- Gateway Arts District
visit. <http://mygatewayarts.org/>
- Maryland Milestones
visit. <https://www.anacostiatrails.org/>
- City of Hyattsville
visit. <https://www.hyattsville.org>



Open this list online!

Social Media

- #Hyattsville #SpeakUpHVL #HVL
- Hyattsville Wiki
- The City of Hyattsville Facebook Page
- Hyattsville Arts Festival
- Hyattsville Wire



Municipal & Local Services

City of Hyattsville Police Dept.

4310 Gallatin Street City Building (Second Floor)

Emergency phone: (301) 985-5050 or 911

Non Emergency Phone: (301) 985-5060

TTY Phone: (301) 985-5039

Fax: (301) 985-5039



Hyattsville Volunteer Fire Dept.

Located at 6200 Belcrest Road

Telephone: (301) 927-5770



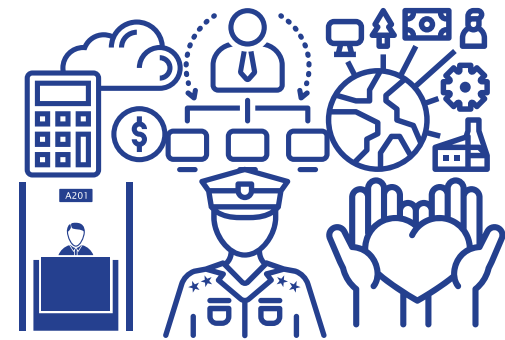
Animal Control Call- (301) 780-7200

The City does not have an animal control office. Please contact [Prince George's County Office of Animal Control](#).



General Information Call - (301) 985-5000

- Finance/ Accounting
- Administration
- City's Clerk's Office
- City Treasure
- Community & Econ. Dvlpmnt
- Code Compliance
- Police
- Dept of Public Works
- Community Services
- Communications
- Volunteer Services



Scan to learn more about municipal services

Trash, Bulk Trash & Recycling

Trash

To learn what day the City pick-up trash on your street visit <http://www.hyattsville.org/930/Weekly-Trash-Services>

- When putting out your trash for pick-up, please use the City-provided covered trash containers and place it between the curb and sidewalk, or by the street, after dark the night before or prior to 7 a.m. on the collection day.
- Please ensure that the cover of the trash container is tightly closed, and that the container is accessible for collection.
- The City will **NOT** pick up the following items:
 - Hazardous material such as motor oil and antifreeze
 - Automobile parts
 - Construction debris such as wallboard, concrete, asphalt, roofing material, and tiles for more information visit. <http://hyattsville.org/934/Bulk-Waste-Special-Services>
- The City provides backdoor trash pickup for the elderly and residents with disabilities who are not able to bring their trash to the curb. For more information, please call **(301) 985-5032**



Bulk Waste & Special Services

Bulk trash collections occur on the first and third Wednesday of each month. Pickups must be scheduled in advance, and are limited to 25 households a day. To request a pickup, residents can call **(301) 985-5032**, use the My Hyattsville mobile app, or visit www.hyattsville.org/request

Residential Compost

The City of Hyattsville offers residential compost pick up on Mondays (except for holidays). visit <http://www.hyattsville.org/931/Compost-Yard-Waste>

Recycling

Prince George's County collects recycling in the City of Hyattsville. To request a recycling bin or cart, find out when your weekly recycling pickup day is, or obtain more information about collection services, please call Prince George's County's Constituent Services Division at **3-1-1** or **(301) 883-4748**.

E-Recycling

Twice a year -the City accepts electronics for recycling free of charge at the Department of Public Works Operations Center at 4633 Arundel Place. If you need to drop off items sooner you can take it to the Prince George's County Electronics Recycling Acceptance Site, located at the Brown Station Landfill in Upper Malboro at 11611 White House Road. For more information, visit <http://www.hyattsville.org/932/Recycling>



Scan for
more
information

Services For Seniors, People with Disabilities & Youth

Senior and Disabilities Services

Throughout the year, the City offers numerous services, programs and events for seniors and people with disabilities. They include wellness classes and presentations, referrals to resource providers, social outings and more. To see all our upcoming programs, please visit the [City Calendar](#), or contact our [senior services coordinator](#) and ask to be added to our mailing list.



Prince George's County Family Caregiving Guide

Prince George's County's Aging and Disabilities Services Division offers a free, online comprehensive guide of resources to individuals and families caring for loved ones. Available in English and Spanish, the guide covers a wide range of topics, including the role of the caregiver, locating additional support, housing options, and much more. Click [here](#) to view and download a PDF version of the guide.

The image shows the cover of the Prince George's County Family Caregiving Guide. On the left is a large purple heart outline containing the text: "Prince George's County Department of Family Services FAMILY CAREGIVING GUIDE". To the right is a photograph of a young Black woman hugging an elderly woman. Text on the right side of the image reads: "A comprehensive guide of resources to make caring for your aging loved one easier." At the bottom left are the logos for Prince George's County, the Department of Family Services, and the "Prince Georges Proud" logo.

Prince George's County
Department of Family Services
**FAMILY CAREGIVING
GUIDE**

*A comprehensive guide
of resources to make
caring for your aging
loved one easier.*

Prince Georges Proud

Youth Program & Services

The City of Hyattsville has many recreational activities for kids of all ages! Learn more about our youth programs at. <http://hyattsville.org/858/Youth-Programs>

Club and Other City Youth Programs

- **Boys and Girls Club for Hyattsville, Mount Rainer, and Brentwood**

Telephone: (301) 864-1112

- **Latin American Youth Center Hyattsville, Langley Park**

Telephone: (301) 431-3121

- **M-NCPPC (Dept. of Parks and Recreation)**

Telephone: (301) 699-CALL (2255)

- **Langley Park Community Center**

Telephone: (301) 445-4508; TTY (301) 445-4512

- **Rollingcrest- Chillum Community Center**

Telephone: (301) 853-2005

- **Prince George's Plaza Community Center**

Telephone: (301) 864-1611; TTY: (301) 445-4512

Non-Profit Organizations Housing Assistance & Community Development

- **Housing Initiative Partnership**

Telephone: (301) 699-3835

- **Hyattsville Community Development Corp.**

Telephone: (301) 683-8267

MORE? GO MOBILE

Looking for local Civic Groups: Affinity Groups, Volunteering and the like?

Find meetings and online neighborhood discussion groups!

Visit www.hycdc.org

For more information visit [Gateway Arts District Arts](#)

[Education Guide](#)



Municipal, County, and Recreation Contacts 2021



Open this Guide
Online!



(As of 06/2021) **Kevin Ward, Mayor**

Telephone: (301) 789-3448

Term: 2019-2023

Email: kward@hyattsville.org

- **Ward 1 - Council Member Sam Dene**

Telephone: (301) 531-4038

Email: sdenes@hyattsville.org

- **Ward 1- Council Member - Joanne Waszczak**

Telephone: (301) 683-8545

Email: jwaszczak@hyattsville.org

- **Ward 2 - Council Member Robert S. Croslin, President**

Telephone: (240) 460-1827

Email: rcroslin@hyattsville.org

- **Ward 2 - Council Member Danny Schaible, Vice President**

Telephone: (301) 583-6281

Email: dschaible@hyattsville.org

- **Ward 3 - Council Member Jimmy McClellan**

Telephone: (301) 615-2392

Email: jmcclellan@hyattsville.org

- **Ward 3 - Council Member Ben Simasek**

Telephone: (610) 563-7608

Email: bsimasek@hyattsville.org

- **Ward 4 - Council Member Daniel Peabody**

Telephone: (301) 583-6281

Email: dpeabody@hyattsville.org

- **Ward 4 - Council Member Edouard Haba**

Telephone: (202) 560-4157

Email: ehaba@hyattsville.org

- **Ward 5 - Council Member Rommel Sandino**

Telephone: (240) 304-2421

Email: rsandino@hyattsville.org

- **Ward 5 - Council Member Joseph Solomon**

Telephone: (240) 487-9179

Email: jsolomon@hyattsville.org

Business Services



Doing Business

The Hyattsville CDC has created a [Business Toolkit](#) as part of its economic development and technical assistance services for Hyattsville and Prince George's County Inner-Beltway communities. The Toolkit serves as a guiding overview and reference for business owners looking to re-locate in Hyattsville or potential business owners looking to start a business here.

Benefits

- Create and register your Business.
- Move your Business.
- Find a Property to Purchase or to Lease.
- Get a quick-and-easy list to register property with the county and with city.
- Learn of applicable tax incentives, loan providers, and contacts.
- Attend an upcoming HCDC Workshops.
- Attend a Business Owners Workshop or Breakfast to share tips and experiences.
- Subscribe to development announcements and local news.
- Benefit from becoming a member of HyCDC.



Search a Database of Local Assets: Businesses, Properties, Dining + More

Mapping and listing over 800 businesses, properties, transit stops, and public art throughout the city's four commercial areas, filter through our online database for your various needs. Data include standard contact information, social media, vacant storefronts, transit points, and where possible, property data from the *Consolidated Route 1 Communities Primary Trade Area (PTA)*. Data are collected on-foot and online.

- [PGC Economic Development Corporation](#)
- [America's Small Business Development Centers \(SBDC\)](#)
- [Small Business Administration \(SBA\)](#)



Scan to learn more about doing business in Hyattsville

State of Maryland

State Governor

- **Larry Hogan (Republican Party)**

Telephone: (410) 974-3901

Visit: governor.maryland.gov

U.S. Senate

- **Chris Van Hollen**

Telephone: (301) 345-5517

Visit: vanhollen.senate.gov

- **Ben Cardin**

Telephone: (301) 860-0414

Visit: cardin.senate.gov

Lieutenant Governor

- **Boyd Rutherford**

Telephone: (410) 974-3901

Visit: governor.maryland.gov

U.S. House of Representatives

- **Steny H. Hoyer - (D) 4th District**

Telephone: (301) 474-0119

Visit: hoyer.house.gov

- **Anthony Brown - (D) 5th District**

Telephone: (301) 458-2600

Visit: anthonybrown.house.gov

General Assembly

Senators and House Delegates for District 22 & 47

- **Senator Paul G. Pinsky - (D)**

Telephone: (301) 858-3155

Email: Paul.pinsky@senate.state.md.us

- **Senator Malcolm L. Augustine - (D)**

Telephone: (301) 858-3745

Email: Malcolm.augustine@senate.state.md.us

- **Delegate Anne Healey - District 22**

Telephone: (301) 858-3961

Email: Anne.healey@house.state.md.us

- **Delegate Diana M. Fennell - District 47**

Telephone: (301) 858-3478

Email: Diana.fennell@house.state.md.us

- **Delegate Alonzo T. Washington - District 22**

Telephone: (301) 858-3652

Email: Alonzo.washington@house.state.md.us

- **Delegate Julian Ivey - District 47**

Telephone: (301) 858-3326

Email: Julian.ivey@house.state.md.us

- **Delegate Nicole A. Williams - District 22**

Telephone: (301) 858-3058

Email: Nicole.williams@house.state.md.us

- **Delegate Wanika B. Fisher - District 47**

Telephone: (301) 858-3340

Email: Wanika.fisher@house.state.md.us



For more information
about State elected
officials scan here

Prince George's County, Maryland

County Services

County Executive and County Council Member

- **Angela D. Alsobrooks - Prince George's County Executive**

Telephone: (301) 952-4131

Email: countyexecutive@co.pg.md.us

For more information visit: [County-Executive](#)

- **Deni L. Taveras -County Council, District 2, Vice-Chair**

Telephone: (301) 925-4436

Email: DLTaveras@co.pg.md.us

For more information visit: [District-2-Taveras](#)

- **Mel Franklin - County Council (D) At-Large**

Telephone: (301) 952-2638

Email: mfranklin1@co.pg.md.us

- **Calvin S. Hawkins, II - County Council (D) At-Large**

Telephone: (301) 952-2195

Email: At-LargeMemberHawkins@co.pg.md.us

County Board of Education District 3

- **Pamela Boozer-Strother, BOE Member**

Email: pamel.boozerstrother@pgcps.org

Phone: (301) 952-6115

- **Dr. Juanita Miller, BOE Chair**

Email: juanita.miller@pgcps.org

Phone: (301) 952-6115

- **Ninah Jackson, Student Member**

Email: ninah.jackson@pgcps.org

Phone: (301) 952-6115



For more information
about local elected
officials scan here

Schools

Hyattsville and its surrounding communities have plenty of schooling options for children and young adults. A full listing is available online at <http://www.hycdc.org/schools>



Scan to see this list online!

Public Schools

Nicholas Orem Middle School

6100 Editors Park Dr, Hyattsville, MD 20782
Tel: (301) 853-0840

Edward M. Felegy Elementary School

6111 Ager Rd, Hyattsville, MD 20782
Tel: (301) 445-8090

Rosa L. Parks Elementary School

6111 Ager Rd, Hyattsville, MD 20782
Tel: (301) 445-8090

University Park Elementary School

4315 Underwood St, University Park, MD, 20782
Tel: (301) 985-1898

Eleanor Roosevelt High School

7601 Hanover Parkway Greenbelt, MD 20770
Tel: (301) 513-5400

Northwestern High School

7000 Adelphi Rd, Hyattsville, MD 20782
Tel: (301) 985-1820

College Park Academy Public Charter

7501 Adelphi Rd, Hyattsville, MD 20783
Tel: (240) 696-3206

Hyattsville Elementary School

531143rd Ave, Hyattsville, MD 20781
Tel: (301) 209-5800

Hyattsville Middle School for the

Creative and Performing Arts

6001 42nd Ave, Hyattsville, MD, 20781
Tel: (301) 985-1760

Private Schools

Chelsea School (6-12)

2970 Belcrest Center Drive, Suite 300, Hyattsville, MD 20782
Tel: (240) 467-2106

DeMatha Catholic High School

4313 Madison Street Hyattsville, MD 20781
Tel: (240) 764--2220

Elizabeth Seton High School

5715 Emerson St, Bladensburg, MD, 20710
Tel: (301) 864-4532

Greenwood School (Daycare, PK, K)

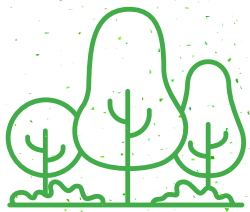
6525 Belcrest Rd, Suites G-80 & G-90, Hyattsville MD 20782
Tel: (301) 458-4860

St. Jerome School (PK-8)

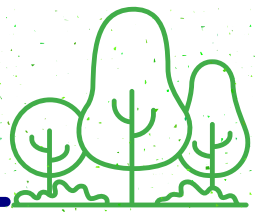
5207 42nd Pl, Hyattsville, MD 20781
Tel: (301) 277-4568

St. Matthew's Episcopal Day (PK)

5901 36th Ave, Hyattsville MD 20782
Tel: (301) 935-5026



Public Parks + Playgrounds



The City of Hyattsville has several parks which are available for outdoor recreational activities.

David C. Driskell Community Park - 40th Ave & Hamilton St. Hyattsville major park, for more information, please visit Driskell Park Amenities, or Pavilion Rentals.

Heurich Park - Ager Rd & Nicholson St. This large grassy park is home to the City's Mobility Playground.

Deitz Park- 4100 block of Oliver St, this park features a playground, small picnic pavilion, and big, shady oak trees.

Robert J. King Memorial Park- Gallatin St. at 42nd Pl, this grassy park contains flower gardens, picnic tables, and a toddler playground. This park is also home to one of the City's Little Free Libraries.

Hyatt Park - Hamilton St. at 36th Ave, this park features a playground and the City's Community Garden.

McClanahan Park - Is the gateway from the neighborhood to the Prince George's Plaza Metro Station.

Nicholson Park - 40th Ave at Nicholson St. A small grassy lot perfect to workout.

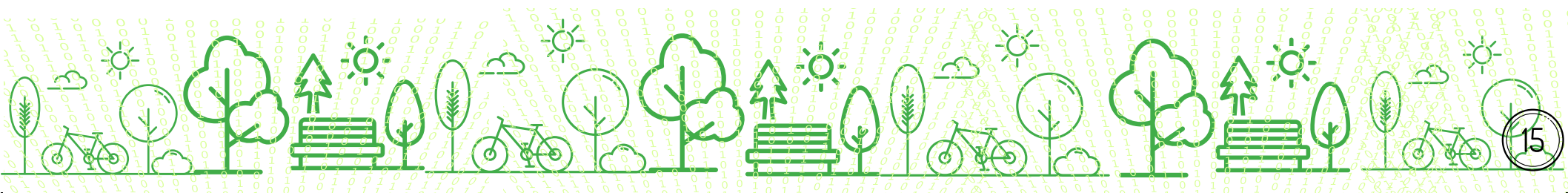
Burlington Park - 46th Ave, and Burlington Rd, this small community park features benches and playground equipment.

University Hills Duck Pond Park - 3400 Stanford St. at the West end of Wells Parkway/Blvd, this park offers a large playground, picnic pavilion, and a pond that is surrounded by a walking path. The picnic pavilion is available for use by permit through Maryland-National Capital Park and Planning Commission. For information on renting M-NCPPC facilities, please visit www.pgparcs.com.

Melrose Park - Rhode Island - 41st St, this park includes a skate park, basketball courts, a soccer field, and a walking / biking path that connects with the Northwest Branch Trail.

Centennial Park - Baltimore Ave. and Hamilton St, this small grassy park, visible from Baltimore Ave.

Kirkwood Neighborhood Park - 2600 Nicholson St, this park It's divided into an area for 2 to 5 year old's and one for kids up to 12 and includes a long slide along with a variety of climbing stations.



In 1845, merchant Christopher Hyatt purchased a parcel of land

Near the Baltimore and Ohio railroad, Washington and Baltimore Turnpike, and shipping ports on the Anacostia River. The surrounding farmland was subdivided into housing lots, and by 1859 the area was known as Hyattsville by the U.S. Post Office and cartographers. The Act of Incorporation of the City of Hyattsville was signed in 1886.

As Andra Damron recounts in *Images of America: Hyattsville*, the end of the Civil War and slavery forced the sale of tobacco plantations at low prices just as the federal government expanded and Washington, D.C., housing prices rose. Hyattsville's hilly location by the turnpike made it ideal for homebuyers seeking relief from Washington's heat. By 1899, an electric streetcar line to Washington had opened. In 1982, the efforts of preservation-minded citizens paid off: about 600 buildings were listed as a district on the National Register of Historic Places. In 2004, the district was extended to include approximately 1,000 structures.

The City of Hyattsville covers just under three square miles. Today, Hyattsville truly is, as its new motto says, "A World Within Walking Distance". Residents benefit from the increasing numbers of local businesses, including a yarn store, bike shop, salons, movie theaters, and restaurants. Hyattsville continues to benefit from its proximity to our nation's capital and the easy access to Washington via two Metro stations and nearby MARC train. With its varied housing stock; its own police force; its newspaper, the *Hyattsville Life and Times*; its designation as a state-designated Arts and Entertainment District; and its diverse and caring inhabitants, Hyattsville—as its old motto said—is "A Good Place To Live".

-The Hyattsville Preservation Association, PreserveHyattsville.org



DID YOU KNOW?

Hyattsville is a Tree City USA and a MD-Certified Sustainable Community. It is also part of the EPA's Green Power Partnership and one of Maryland's Smart Energy Communities.

Scan for more information



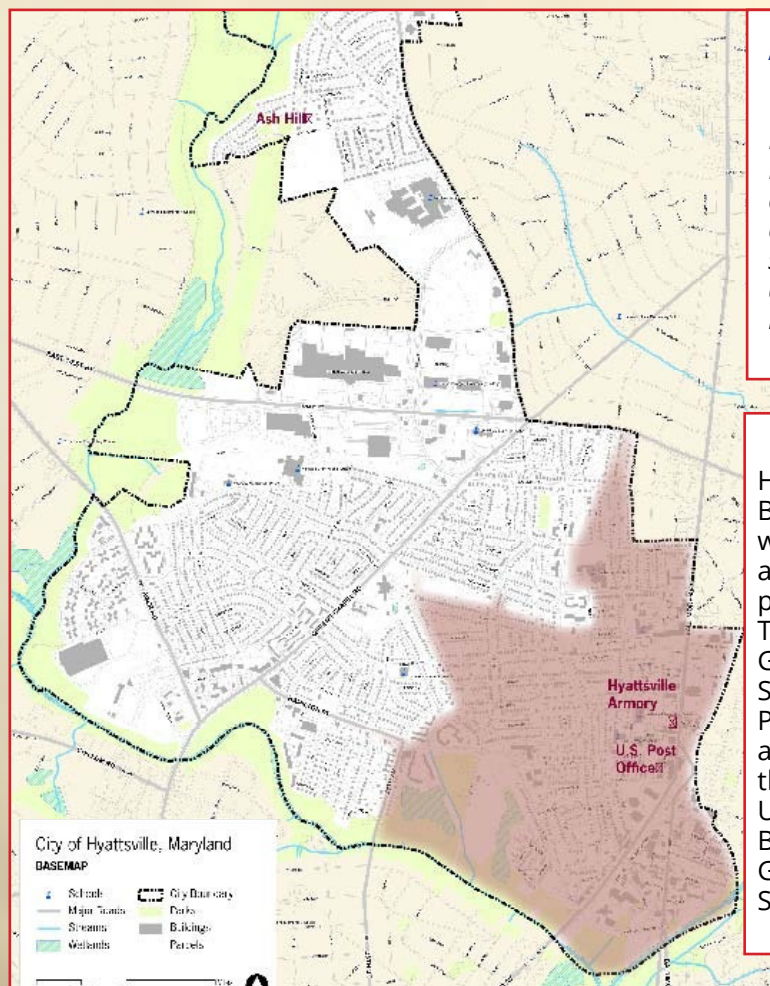
The Historic District

In the heart of Hyattsville, this residential neighborhood

stretches between the Route 1 Corridor, Prince George's Plaza, and West Hyattsville. [The Historic District](#) features nineteen properties listed in the National Register of Historic Places, which are a fine example of our City's history and architectural development.

Regular events include [The Annual Historic Hyattsville House Tour](#), [The Hyattsville Cyclocross Bicycle Race](#), [The Great Magruder Park Egg Hunt](#), and more.

Ready for a walk? Download the Historic Hyattsville Walking Tour Brochure at www.preservehyattsville.org; it even includes a game for all ages.



A Blast from the Past

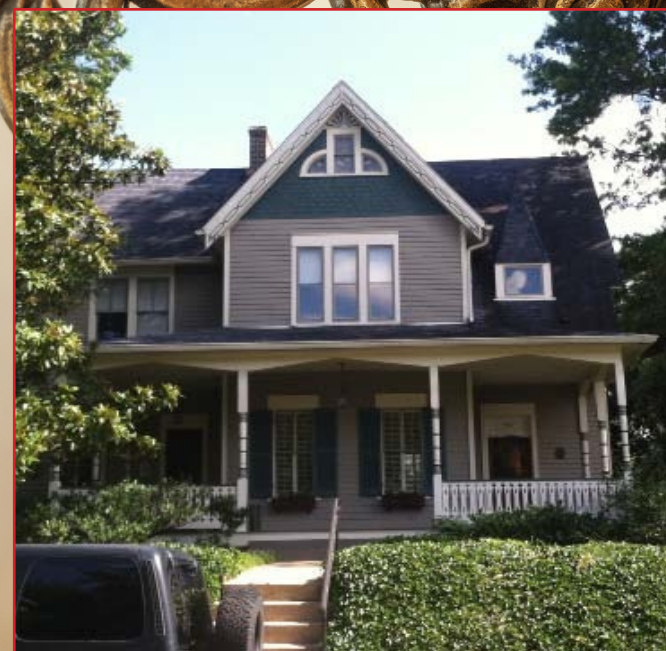
The Suburban Citizen (1892) writes: Hyattsville is a beautiful village... Its surroundings are all of the most delightful character, and as a business or residential location it cannot be surpassed, nesting as it does on and around a beautiful chain of Maryland hills.

Did You Know?

Hyattsville was originally a stop on the Baltimore-Ohio Railroad, and along with Riverdale Park, grounded itself as a transit-rich area with quick access to plenty of Greater DC resources. Today, with the WMATA Prince George's Plaza and West Hyattsville Stations close proximity to Riverdale Park's MARC station, and the automotive-friendly Route 1 Corridor, the City is only miles away from the University of Maryland, the DC line, Bladensburg and five miles drive from Greenbelt Largo, New Carrollton, and Silver Spring.



"Shepherd-Sibley House" - 5108 42nd Avenue (Private Residence)



"W.G. Lown House" - 4107 Gallatin Street (Private Residence)

DID YOU KNOW?



The City of Hyattsville is close to major interstates such as I-295, 95, 495. Several state, and county highways pass through or are accessible nearby. The city has a population of 18,230, a diverse population that includes immigrants, gay communities, African Americans and Latinos. The city has a number of Victorian houses, Sears homes and Arts and Crafts bungalows in a federally recognized historic district. You'll be pleasantly surprised to find convenient access to public transit and parking, not to mention: shopping, dining, schools, parks, playgrounds, sports, community centers.

In the last couple of years Hyattsville has added new town-homes and shops in the Arts District and along East-West highway, high-end apartments near the Prince George's Plaza metro station and development planned near the West Hyattsville Metro station.



Popular local hot-spots in Hyattsville include **Franklin's**, **Busboys and Poets** and **Vigilante Coffee** a nationally ranked roster- all of these places are located along Route One.



Prince George's Mall



University Town Center



Route One / Hyattsville Art District



Retail + Dining+ Entertainment



The City of Hyattsville Dining Guide



www.hycdc.org / (301) 683-8267 / 4314 Farragut St



There are over **80 restaurants**, bars + take-outs with places to sit and dine within Hyattsville. The city has three popular restaurant nodes:

- **The Route 1 Restaurant Cluster,**
- **West Hyattsville's Queens Chapel Town Center,** and
- **The many shopping centers of Prince George's Plaza Transit District**

Not to mention a few hidden gem restaurants and cafes on the way! Grab a dining guide to find your niche: www.hycdc.org/dining



For more information scan here



MPG MALL AT PRINCE GEORGE'S

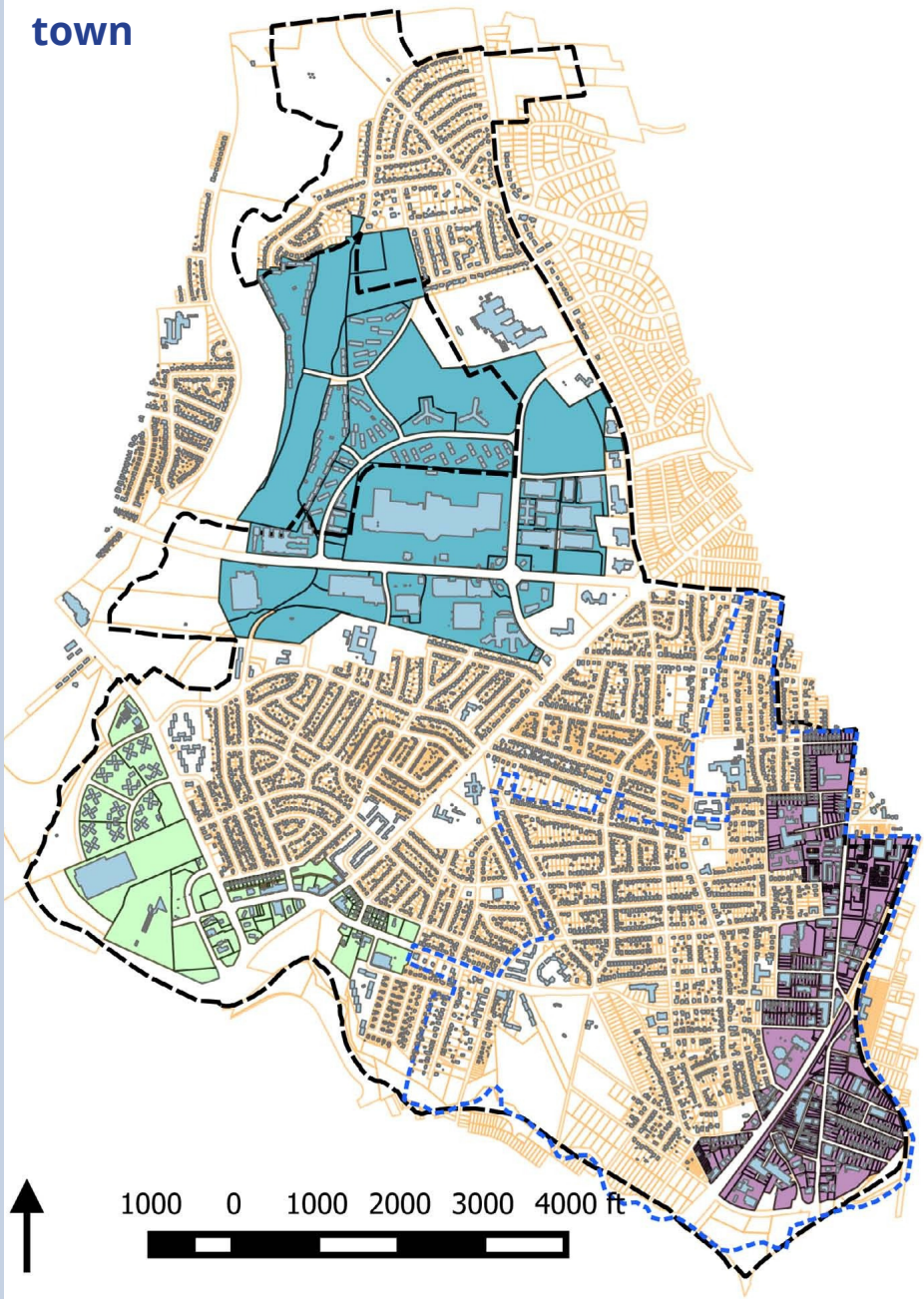


The Mall at Prince George's is full of top-tier retailers and dining options in the center of Hyattsville, Maryland. A one-stop regional mall offering affordable fashion, jewelry, cosmetics, electronics, children's clothing, toys, home décor, and much more. It also hosts many free events and programs for the community and families to enjoy year-round. Other nearby shopping centers include **University Town Center**, and the **Shoppes at Metro Station**.



Getting Around Hyattsville

Three walkable neighborhoods, one great town

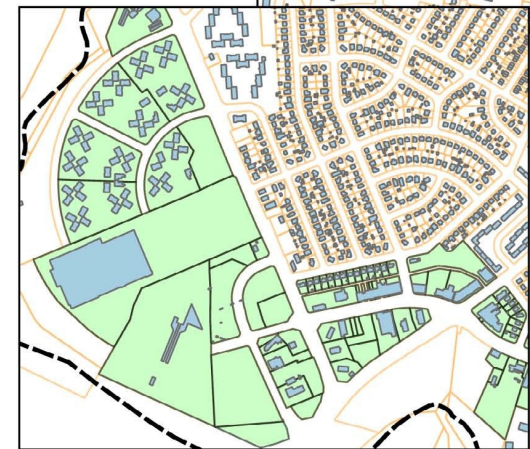


Scan for more information

Prince George's Plaza Transit District



West Hyattsville Transit District



Route 1 Corridor and the Gateway Arts District

Your Key to the City

- Buildings
- Historic District
- City Boundary
- West Hyattsville
- Route One Corridor
- Prince George's Plaza

Local, Regional, International; within walking distance...

Public Transit in Hyattsville

Walk a trail, catch a bus, drive, pedal, hop on the train:



Rail + Bus Within the City of Hyattsville:

- [Prince George's Plaza Station](#) (Green Line – 86, F8, 13)
- [West Hyattsville Station](#) (Green Line – F8, 13)

Along Route 1:

- **West:** Riverdale Park MARC Station (Camden Line)
- **North:** College Park-U of MD Station (Green Line)
81, 82, 83, 84, 86, 17, MARC
- **South:** Rhode Island Ave-Brentwood DC Station (Red Line)
(Red Line, 81, 82, 83, 86)



Go Mobile: call the following services or head online for pricing + hours of operation:

- [Call-a-Bus](#), Telephone: (301) 499-8603
- [Guaranteed Ride Home](#), (800) 745-RIDE (7433)

Find a bus in live-time:

- [The Bus](#)
- [NextBus](#)
- [Route1Ride.org](#)
- Find a TransitScreen at a participating business near you.



Route 1 Ride Wrap, Credit Marlyand

Did You Know?

Route 1 has a fast, efficient, and inexpensive shuttle that engages riders and drivers to see the economic development that is making Route 1 a destination.

The history of Route 1 goes back to an on-going need for full-length corridor service that could transport riders along any part of Route 1 inside the beltway.



Directions to Prince George's Mall



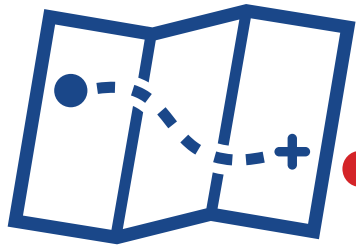
Directions to Prince George's Plaza by bus

- **From the South:** [Rhode Island Ave- Brentwood Station](#): Take the 86 and get off at the station.
- **From the North:** [College Park-U of MD Station](#): Take the 86 Southbound and get off at the station.
- **From the Southwest:** [West Hyattsville Station](#): Take the F8 or the Bus 13 and get off at the station.



Directions to Prince George's Plaza by foot

- **From the Route 1 Corridor**, walk north on Baltimore Ave., turn left at Queensbury Rd. Keep walking until you find Queens Chapel Rd. Cross the intersection, and stay straight as Queensbury becomes Belcrest Rd.
- **From the West Hyattsville Station**, walk north on Queens Chapel Rd. and turn left at Belcrest Rd.*



Directions to West Hyattsville



Home to Queens Chapel Town Center, featuring locally

owned restaurants and shops, popular routes of the [Anacostia Tributary Trail System](#), and the West Hyattsville Metro Station. With several international restaurants, tailors, thrift stores, and grocers, you will find that West Hyattsville captures a walkable, suburban small-town feel with plenty of multicultural finds.

Directions by bus



•From the North: [College Park-U of MD Station:](#)

Take the 86 Southbound, get off at the Prince George's Station and transfer to the F8 or The Bus 17.

•From the Northwest: [Prince George's Plaza Station:](#) Take the F8 or the Bus 13 and get off at the station.

•From the South: [Rhode Island Ave- Brentwood Station:](#)

Take the 86 and get off at 38th Ave. and Hamilton St. Walk a half mile northeast on Hamilton St., and you'll note the Bestway Supermarket, the Hamilton St. Garden, and stay straight to reach the Queens Chapel Town Center Shopping Center.



Scan for more information



TOP 10 LISTS

A World Within Walking Distance. Explore our Top 10 lists for a self-guided walking tour of area restaurants, public art, historic sites, and tourist attractions.

Directions to Route 1 Corridor

A growing corridor of arts, entertainment, and dining



Downtown Hyattsville is a place to take an evening walk, see an art exhibition, or have a night out on the town. Explore Route 1's walkable shopping centers, shops, apartment complexes, and townhomes.

Directions by bus

- **From the North:** [College Park-U of MD Station](#): Take the 83, 86, or The Bus Route 17/[Route1Ride](#), Take the 86-Southbound towards Rhode Island Ave- Southbound towards Rhode Island Ave-Brentwood. Get off at Jefferson St. and 40th Ave., turn Get off beside Busboys and Poets at Jefferson left, walk up Jefferson St., cross at the intersection; you St. & Baltimore Ave. If you take the 86, get off will see Busboys & Poets. If you take the F8 or The bus at Jefferson St. and 40th Ave., turn left, walk up13, get off at Baltimore Ave. and Jefferson St.
- **From the Northwest (on foot):** [Riverdale Park MARC Station](#): Walk south along the Route 1 Hiker-Biker Trolley Trail.
- **From the South:** [Rhode Island Ave-Brentwood DC Station](#): Take the 83, which runs through the Arts District. Get off beside Franklin's at Rhode Island Ave. & Baltimore Ave.
- **From the Northwest:** [Prince George's Plaza Station](#): Take the 86-Southbound towards Rhode Island Ave Brentwood. Get off at Jefferson St. and 40th Ave., turn left, walk up Jefferson St., cross at the intersection; you will see Busboys & Poets. If you take the F8 or The Bus 13, get off at Baltimore Ave. and Jefferson St.*
- **From the Southwest:** [West Hyattsville Station](#): Take the F8 Eastbound towards Cheverly Station or The Bus 13 Southbound. The F8 turns right onto Rhode Island Ave. at Jefferson St. The Bus 13 runs both directions, running through Rhode Island Ave. Get off at Baltimore Ave. and Jefferson St.*



Scan for more information

TOP 10 LISTS

A World Within Walking Distance. Explore our Top 10 lists for a self-guided walking tour of area restaurants, public art, historic sites, and tourist attractions.

Arts + Culture

Home to the [Gateway Arts District](#), the [Route 1 Corridor](#) (Baltimore Ave.-Rhode Island Ave.) greets its visitors from Washington DC to Prince George's County, and features popular restaurants like:

[Franklin's Restaurant](#) & Brewery, Busboys & Poets, Yes! Organic Market,
• [Vigilante Coffee](#), [Chez Dior](#),
[Shagga Coffee](#), and more.

Visit www.mygatewayarts.org to find an events calendar, arts resources, and artist + business directories.

**GATEWAY
ARTS
DISTRICT**

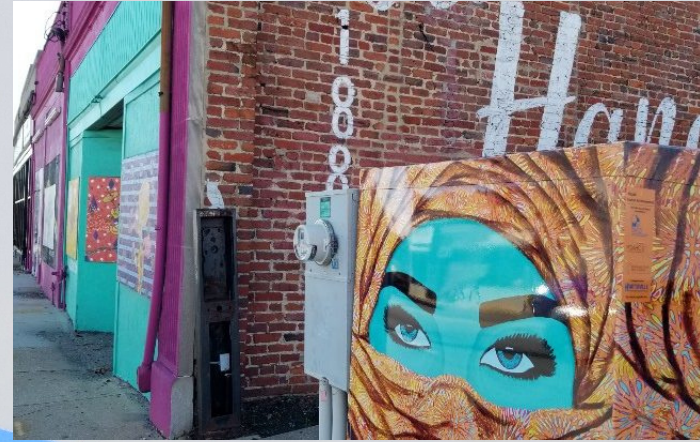
Directions

Located along Baltimore Ave/US Route 1. The Arts District runs along Rhode Island Avenue (beginning at Eastern Avenue) turning into Baltimore Avenue and ending at Oglethorpe Street on the east side; it tailors Baltimore Avenue to Madison Avenue on the west side. There's quick access to the MARC train, two Green Line stations, and several bus lines to Mount Rainier.

Local Art In Hyattsville



By Rashad Ali Muhammad, Right "IVY" - Located 5122 Kenilworth Ave. Left " BANTU BOMBSHELL" - Located 4836 Kenilworth Ave.



*"Niqabi" by Rashad Ali Muhammad
Located South along Route 1 Hyattsville*

Since 2016, the Hyattsville CDC has facilitated a program designed to transform select traffic boxes in Prince George's County into public artworks.



*"Ribbon of Life" by Alan Binstock
Located at University Town Center Gateway*

GATEWAY ARTS DISTRICT



INNOVATE / CREATE / INSPIRE



Prince George's County's Gateway Arts & Entertainment District is comprised of the four municipalities of Hyattsville, North Brentwood, Brentwood, and Mount Rainier along Route 1. Enjoy the Corridor: Explore MyGatewayArts.org for free information, recent news, and a calendar of events by artists and organizations.

PLAY

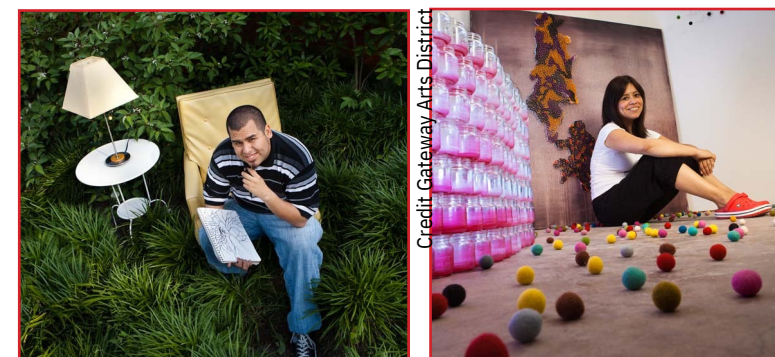
With a variety of restaurants, coffee houses, local and regional theaters, galleries and entertainment, the Gateway Arts District is the perfect place to spend time with family and friends. Along the Corridor, you can easily discover recreational activities to do for the weekdays, weekends, weeknights, or any time you decide to have some fun. Remember to check out the online [calendar](#) for daily activities.

WORK

Being a safe, active, and attractive environment, the Gateway Arts District is also the community's best tool to market and search for artists, designers, or art-related organizations and businesses. Learn about the list of resources for Gateway artists and businesses on the [Creative & Business Resources](#).

LIVE

The Gateway Arts District is the perfect home for artists, art-lovers, families, commuting professionals, and students. It offers tax benefits for artists, affordable housing and its closeness to DC, emerging businesses, among others. The Gateway Arts District is a place to inspire and get inspired.



FEATURED ARTICLE

Credit Gateway Arts District

Art Classes, Workshops, And Camps For Youth



For more information scan here

•ArtWorks Now

Arts & Crafts Classes, Workshops, and Camps
4800 Rhode Island Ave, Suite 1, Hyattsville, 20712
Telephone: (301) 454-0808

•Brentwood Arts Exchange

Camps, Arts & Crafts Workshops such as
Photoshop + Painting
3901 Rhode Island Ave, Brentwood, 20722
Telephone: (301) 277-2863

•Washington Glass School

Glasswork Classes, and Workshops
3700 Otis Street, Mount Rainier, 20712
Telephone: (202) 744-8222

•Pyramid Atlantic Center

Printmaking, papermaking, and book arts
4318 Gallatin St, Hyattsville, MD 20781
Telephone: (301) 608-9101

•World Arts Focus & Joe's Movement Emporium

Arts Classes/Workshops and Camps
3309 Bunker Hill Avenue, Mount Rainier, 20712
Telephone: (301) 699-1819

1. Ballet Tap and All That Jazz
2. Just Rock Enterprises
3. Prince George's African American Museum
4. Three Little Birds Sewing Co.

HEAD ONLINE: GO MOBILE

Hyattsville is just one municipality within the Inner Beltway communities stretching down Route 1.

On the Hyattsville CDC's online [Business Directory](#), you can find a live list of area schools, arts education and youth centers, and even civic and religious centers that offer after-school programs.

For more information check out the [Gateway Arts District Arts Education Guide](#)



ABOUT THIS GUIDE

This Welcome Guide was created by the Hyattsville Community Development Corporation.

For more and regularly updated information, please visit the Hyattsville CDC website.

Telephone: (301) 683-8267, Email: admin@hyattsvillecdc.org



Open this Guide Online!

www.hycdc.org / (301) 683-8267 / 4314 Farragut St.



HYATTSVILLE
Community Development Corp
a 501(c)3 non-profit organization



HYATTSVILLE

Community Development Corp
a 501(c)3 non-profit organization

The Hyattsville CDC is a 501 c(3) non-profit organization. We are professionals, tradesmen, business owners, artists, and longtime and new residents. We work to reverse indifference and blight in the City of Hyattsville and surrounding communities. We recognize Hyattsville's social, cultural, and material assets, and are committed to harnessing our community's potential and talents to revitalize the City and neighboring areas. Our board and staff are comprised of Hyattsville residents and local stakeholders. We are always open and eager to interact with those interested in our community.



Scan for
more
information

•4314 Farragut Street
Hyattsville, MD 20781
•(301) 683-8267
•www.hycdc.org
•admin@hyattsvillecdc.org